



Nottinghamshire  
Safeguarding  
Children Partnership

# NSCP Newsletter

January 2024

Welcome to the January 2024 edition of the NSCP newsletter. It has been a very busy and exciting time since the last newsletter with the Partnership leading on a needs-led front door project alongside Public Digital consultants who specialise in giving targeted advice to help transform organisations. They have been working with us to review the Multi-Agency Safeguarding Hub (MASH), in order to create a new front-door with a greater focus on early help. More detailed information about how this has been going and the proposed changes are included within this newsletter.

You will also find here more information on child exploitation and the new 8 practice principles which promote a holistic response to child exploitation and extra- familial harm, alongside information on the new Child at Risk of Exploitation (CARE) Team within the Police. See the list opposite with other content included this time. We hope you find it interesting and useful for your roles in safeguarding children.

A handwritten signature in black ink, appearing to read 'Rob Griffin'.

**Rob Griffin, Assistant Chief Constable  
Chair of NSCP Senior Leadership Group.**



## Also in this issue

- Review of the Front Door - MASH
- Child Exploitation and the new CARE Team
- Neglect
- Encompass
- Early Years Safeguarding Conference
- NSCP Business Plan
- Domestic Abuse: Non-Fatal Strangulation
- Rapid Reviews - the learning identified
- Professional Curiosity
- Training Opportunities
- New E Learning
- Meet the Team

## Review of the Mash – A new needs led front door

We are proud of the Nottinghamshire MASH, and we know that colleagues do a brilliant job in that space of quickly identifying children who need help. However, the MASH has been in place for 11 years now and the safeguarding context has changed greatly in this time.

Children, young people, and families who are referred to MASH often need support beyond safeguarding or social care. Currently, these needs aren't always being met because the MASH is optimised to identify safeguarding and Social Care service needs. There is a need to identify these needs and provide support to prevent children, young people, and families' circumstances from further deterioration and from needing social care intervention in the future.

We are joining other partnerships nationally who recognise the need to develop a model that reflects the current safeguarding picture. We have the ambition of creating a new front door where colleagues are able to focus on needs rather than thresholds: **the right support, for the right children, at the right time.**

Over the past three months, a multi-disciplinary team (named Diamond) has formed and worked together to start the transformation of our MASH into a Needs Led Front Door. Our Diamond group has been reflecting on identified problem statements and translating them into user needs. We have identified areas for testing and have started testing, with implementation of some areas now beginning.

We are sharing weekly updates and are hosting 'show & tells' to help everyone who works with children in Nottinghamshire to understand and input into what we're working on. It offers the opportunity to share what we've done, what we've learned and what we're planning on doing next. It creates a feedback loop which people - like all of you! - can use to ask questions, form connections, and influence the work. We are fully committed to doing this work in the open, and welcome ideas and feedback from anyone who is interested in the work.

If you would like to read the weekly updates then you can do so at this webpage:  
<https://nscp.nottinghamshire.gov.uk/learning-from-practice/needs-led-front-door-project/>

If you would like to be added to the distribution list for the updates and the show and tell invitations, then please email our project officer:  
[christopher.neijs@nottscc.gov.uk](mailto:christopher.neijs@nottscc.gov.uk)

## NSCP Business Plan 2023-2027 – Have you seen this yet?

It is now on our website, and it sets out the areas we'll be working to develop on in the coming years across Nottinghamshire to safeguard children and young people:

[NSCP Annual Report and Business Plan \(nottinghamshire.gov.uk\)](https://www.nottscc.gov.uk/annual-report-and-business-plan)

The plan highlights 3 commitments:

1. We will work together to keep young people safe in their homes and communities.
2. We will work together to ensure each child who needs support or help receives the right service at the right time for them and their family.
3. We will work together to ensure the partnership reflects, learns from, and acts on the experiences and feedback from children, young people and their families.

## Child Exploitation

### Review of Child Exploitation governance and practice in Nottinghamshire

The Tackling Child Exploitation in Nottinghamshire Cross Partnership Group relaunched in July 2023. Building on work of the previous 'child sexual exploitation cross authority group' and the 'child criminal exploitation steering group', this group brings together strategic leads from Nottinghamshire County Council, Nottingham City Council and Safeguarding Partners to share a joint commitment to preventing and protecting children from child exploitation across Nottinghamshire County and Nottingham City.

The shared vision of the cross-partnership group is to commit to practice that is underpinned by eight multi-agency practice principles for responding to child exploitation and extra familial harm (see below for further details) which are evidence-based drawing on academic research, practice wisdom and lived experience. Alongside a commitment to strengths-based practice, this will support the partnership commitment to providing the right help at the right time to children and families exposed to those who seek to cause them harm.

To achieve this ambition, the group has adopted a framework developed by the Serious and Organised Crime Strategy (2013) which centres around a series of responses under the headings of 5 P's: Prevent, Protect, Pursue, Provision and Partnership. This sets out a big picture response to tackling child exploitation from strategies to raise public awareness, increase safety in communities, support and protect children out of child exploitation and prosecuting those behind their abuse. The framework also provides a formula for tackling child exploitation on an individual level which will be reflected in support and protection plans for children.

#### Tackling Child Exploitation 8 Practice Principles:



The multi-agency Practice Principles for responding to child exploitation and extra-familial harm are designed to support effective partnership working across different local contexts; providing a common language and framework to better respond to child exploitation and extra-familial harm.

The Practice Principles have been developed by Research in Practice with The Children's Society and Safer Lives at the University of Bedfordshire 2023; a programme commissioned by the Department for Education (DfE). The Tackling Child Exploitation Cross Partnership Group have signed up to these multi-agency practice principles for responding to child exploitation and extra familial harm across Nottinghamshire.

## Child Exploitation continued.....



Please click on the following link to watch a brief overview of the Practice Principles.

[Multi-agency Practice Principles for responding to child exploitation and extra-familial harm \(researchinpractice.org.uk\)](https://researchinpractice.org.uk)

### Use of language to describe children impacted by exploitation

We need to think very carefully about the language that we use when raising concerns about a child impacted by exploitation. Language implying that the child or young person is in any way complicit with or responsible for the exploitation that has happened or may happen to them, reinforces the harm they have suffered and must be avoided. Language should reflect the presence of coercion and the lack of control children and young people have in abusive or exploitative situations and must recognise the severity of the impact exploitation has on the child or young person. Victim-blaming language reinforces messages of shame and guilt from perpetrators and may prevent the child or young person from disclosing their abuse, through fear of being blamed by professionals. When victim-blaming language is used between professionals, there is a risk of normalising and minimising the child's experience resulting in a harmful and inappropriate response. The Children's Society have produced a language document which is an excellent resource for replacing unhelpful language with words that describe the harm a child faces in a way that avoids placing blame on the child:

<https://www.childrensociety.org.uk/information/professionals/resources/child-exploitation-language-guide>

**The Home Office unveiled Safer Street** in January 2020 which aims to help local authorities and their partners secure extra resources and tools to prevent crime and increase community safety. Communities across Nottinghamshire have already benefitted from additional CCTV, extra Automatic Number Plate Recognition technology, free home security upgrades and increased police patrols to boost intelligence and reduce the fear of crime. There have also been environmental improvements and changes in street design including better street lighting to make crime more challenging and increase the likelihood of offenders being caught. District Council Community Safety Teams across Nottinghamshire have led on this work and have raised both the safety and perception of safety in their localities. Community Safety Teams have become key safeguarding partners for tackling child exploitation through the collaboration of support available to children and families with a placed based approach to disrupting child exploitation. Many of the initiatives developed under the Safer Streets program are an essential component of a contextual safeguarding approach to tackling harm that occurs outside of the home including child exploitation.

**The Nottingham City and Nottinghamshire Violence Reduction Partnership** has provided space for other collaboration between the Community Safety Partnerships and the Nottinghamshire Safeguarding Children Partnership because of The Police, Crime, Sentencing and Courts Act 2022 providing new duties in respect to Serious Violence. The specific new Serious Violence Duty requires specified authorities to work together to prevent and reduce serious violence, including identifying the kinds of serious violence that occur in the area, the causes of that violence, and to prepare and implement a strategy for preventing and reducing serious violence in the area. An area profile of serious violence has been developed for each district in Nottinghamshire and work is currently being undertaken to produce local response plans to reduce violence using placed based approaches.

## Child Exploitation continued.....

**Neighborhood Policing Teams in each locality** of Nottinghamshire are leading on a partnership approach to managing and disrupting risk towards young people involved in or linked to knife crime, serious violence or child exploitation including county lines. These multi-agency forums are called Neighborhood Safeguarding and Disruption (NSD) meetings, they meet monthly, are chaired by the local Police Detective Inspector and will seek to promote the sharing of information and intelligence between Nottinghamshire Police and partner agencies.

**This is an exciting time for both Nottinghamshire and Nottingham City Safeguarding Partnerships and hopefully one of the first of many opportunities for us to bring together capacity not only in terms of resource but our passion, commitment, and dedication to safeguard children in Nottingham City and Nottinghamshire County against abuse and exploitation.**

For more information about any of the above or if there are any schools or academies that would like to be involved in the strategic development of this work, please contact Hannah Johnson or Hazel McKibbin as we are eager to have more input for our school's community.

[hannah1.johnson@nottsc.gov.uk](mailto:hannah1.johnson@nottsc.gov.uk) [hazel.mckibbin@nottsc.gov.uk](mailto:hazel.mckibbin@nottsc.gov.uk)

### **New Police CARE Team - Child at Risk of Exploitation Team**

On Monday 6 November 2023, the Sexual Exploitation Investigation Team (SEIU) became the Child at Risk of Exploitation Team (CARE team). These exciting changes will improve the way the Police will be tackling crime and intelligence involving the exploitation of children.

The team will now have ownership of both CSE and CCE (as opposed to purely CSE previously under SEIU) and will work closely with the County Lines Team in Serious Organised Crime (SOC), Local Policing, and external partners.

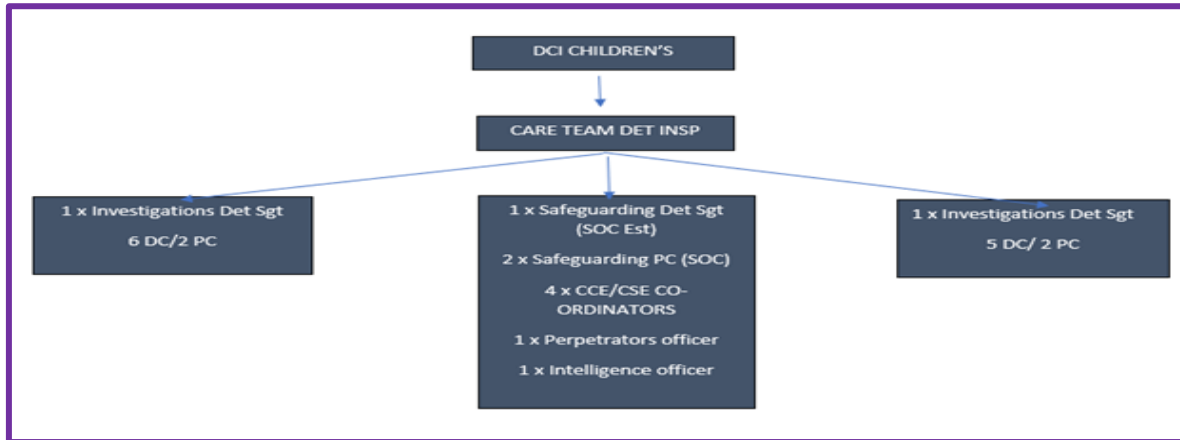
These changes will improve victim outcomes, protect children from exploitation and hold perpetrators to account. As a result, the Police will earn the trust and confidence of the communities we serve and ensure Nottinghamshire is a safe place for children to live and visit.

The current Sexual Exploitation Investigation Unit (SEIU) will change to the Child at Risk of Exploitation (CARE) Team. The creation of the CARE team will combine the safeguarding and investigative response to both Criminal Child Exploitation (CCE) and Child Sexual Exploitation (CSE) under the Public Protection command.

There are still several vacancies within the team for Detective Constables and Police Constables that are currently being advertised and open for recruitment. For further information please contact [paul.lefford@notts.police.uk](mailto:paul.lefford@notts.police.uk)

## The new Police CARE Team

The team structure will be:



The aims of the CARE team will be to:

- Improve the police response to Child Exploitation (Sexual and Criminal) by having a multi-disciplined team within Public Protection.
- Improve criminal justice outcomes against perpetrators who seek to exploit children in Nottinghamshire.
- Respond to intelligence identifying children at risk of Sexual and Criminal Exploitation whilst seeking enforcement opportunities to target those that seek to harm the most vulnerable in our communities.
- Improve our police response to the early Identification of Child Exploitation in line with our force vulnerability strategy and the National Vulnerability Action Plan (NVAP).
- Work with internal and external partners to ensure we appropriately safeguard and protect those at risk of exploitation.
- Build trust and confidence within our communities reflecting our priorities and seek to achieve our Force Vision, Duty and Commitment principles.
- Seek to target high harm offenders utilising all available tactical options and legislation available to prosecute offenders and disrupt criminal behaviour. This includes Child Abduction Warning Notices, Slavery and Trafficking Risk Orders and Sexual Risk Orders.

The CARE Team's aims and objectives are underpinned by the below 4 'P' framework:

- **Protect** individuals and communities from exploitation through promoting the safety and welfare of all children within Nottinghamshire. Utilising data and intelligence to identify and support children, families, parents and professionals working together to reduce harm to young people.
- **Preparing** and equipping our staff with the skills and training to respond effectively and collaboratively to exploitation concerns from partnership agencies, victims or our communities relating to child safeguarding matters.
- **Prevent** and reduce the risk of exploitation posed to children by working with internal and external partners to identify and support those vulnerable to exploitation at the earliest opportunity. Raise awareness of CSE and CCE amongst professionals, the public, carers and communities to enable effective identification and reporting mechanisms.
- **Pursue** those responsible for child abuse in the form of criminal and sexual exploitation through prosecution and disruption. In conjunction with SOC, Op Reacher and NPT identify and relentlessly pursue those who seek to exploit children and place before the courts for prosecution or use civil orders to protect the vulnerable.





## Partnership work on Neglect

### Revised neglect toolkit and new separate guidance

The neglect toolkit and separate guidance document were originally launched in 2021 across Nottinghamshire and Nottingham City for professionals to use in partnership with families when there is concern that the needs of a child are being neglected. The toolkit is designed to enable honest conversations with families around areas of strength in their parenting and areas which need to change. The language in the toolkit has been refreshed towards a strength-based approach, and additional sections have been added on parental conflict and positive values. The section on the parents/carers ability to achieve change has also been expanded. The requirement to complete the whole toolkit has been removed, in acknowledgement that professionals are likely to have helpful information focussed in only a few areas of the toolkit. The [Neglect Toolkit](#) and [Guidance](#) have been produced jointly by the Nottinghamshire Safeguarding Children Partnership and Nottingham City Safeguarding Children Partnership.

### Neglect audit

2023 saw the first joint Nottinghamshire and Nottingham City Safeguarding Children Partnership audit which looked at partnership responses to child neglect for ten children whose child protection plans for neglect had ended in the summer.

Areas of strength were identified as follows:

- Good identification of neglect pre-birth for 4 children
- Good identification of need for 9 out the 10 children audited
- Good work by schools, prompt referrals and good support to children
- Good work by police, involvement in strategy discussions, information sharing and Initial Child Protection Conferences.
- Good partnership working in terms of communication and coordination

Learning was identified and recommendations made as follows:

- Further work with partners to encourage the early and frequent use of the neglect toolkit as part of the assessment process and then as part of ongoing work with families. This is likely to help professionals to focus on the impact of neglect on the child and encourage progression in the work to assist the family.
- Any continuing barriers for the involvement of GPs in child protection processes to be addressed, both at S47 stage and in terms of child protection conferences.
- Some issues with the flagging of children's child protection plans on health records were noted and processes are to be reviewed.
- The contribution of 0-19 services to child protection meetings to be clarified and improved.

## Encompass – what is it?

**Encompass is a process that informs schools of police reported domestic abuse incidents where a child has been in the same household or is affected, during the next school day.**

We began in 2014. There were briefings in each district to support schools in understanding the process and why incidents may or may not result in an Encompass notification, and also with how to effectively use the information to support children and families. Police and myself have done refresher briefings for schools this term, which were attended by around 200 safeguarding leads.

Operation Encompass is a national scheme, with the Department for Education and Home Office endorsement. Whilst there are some differences in how the notifications are delivered across the Country, the principles are the same.

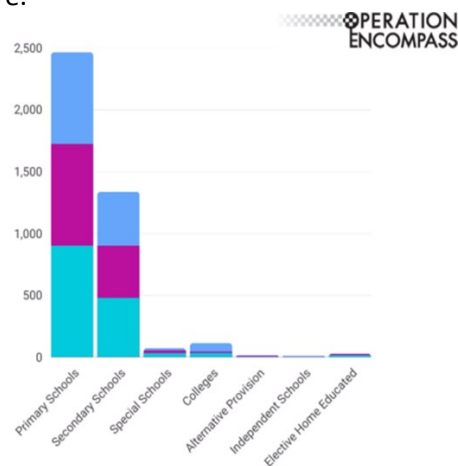
In Nottinghamshire Police send a spreadsheet of medium and high-risk incidents to MASH, then a MASH Officer sends the information onto schools. You may see these in case notes on Mosaic (if you have access to this IT system). They also share these with health, so notifications are added to System One records for children who are not yet in full time school so that Healthy Families Teams are also aware.

### Increasing numbers

There has been an increase in how many notifications we send to schools year on year with 1474 sent in 2022. Since we began 8264 were sent up to the end of 2022.

Primary schools receive the most, but for post 16 settings it's harder to identify the right place to send them, so there are probably more.

Encompass  
Nottinghamshire  
Notifications by  
establishment type  
Jan 2022 to July 2023  
Source: Encompass



### What is the impact?

**Children are supported better is the core answer. It sits alongside the safeguarding pathway, but it doesn't replace it.**

- With this information, school staff are better equipped to be able to understand the root causes of a child's behaviour, for example behavioural issues, absenteeism, ill health, anti-social behavior, and substance misuse.
- Schools can appropriately respond to some of the warning signs that a child had witnessed domestic abuse.
- The MASH will receive referrals directly from police where there is a safeguarding risk. School can make a referral themselves if they feel that the notification raises concerns about a family to the level 4 threshold in Pathway to Provision, but they don't usually need to repeat the Encompass information.

Find out more at <https://www.operationencompass.org/>





### **Early Years Safeguarding Conference – A great networking event!**

On Friday 17<sup>th</sup> November 2023 Early Years over 90 providers from pre-schools, day nurseries, out of school clubs and childminders attended the first Early Years Safeguarding Conference, which took place at Newark Showground. The aim of the conference organised by early childhood services (ECS) was to foster collaboration, enhance the knowledge of the Designated Safeguarding Leads in early years settings and to provide opportunities to share best practice.

The keynote speaker was Ruth Pearson who spoke to delegates about gaining a fuller picture of a child's lived experience through Professional curiosity. After the keynote speech Designated Safeguarding Leads were offered the opportunity to attend 4 workshops on Managing Allegations and concerns against Professionals working with and volunteering with Children (LADO), MASH Assessment and Early Help unit – A quick guide to who, what and when (MASH education Officer and CSC Assessment team), Supporting children and their families affected by domestic abuse (Equation) and Reflecting on Safeguarding concerns (ECS).

There was also representation from Nottinghamshire Women's Aid, NSPCC, NSCP, Nottinghamshire Virtual School and Nottinghamshire Children's Centres who shared with sector through a marketplace the support they can offer.

*76% of those attending the conference found it to be excellent with a further 23% saying it was good. In their evaluation of the day one delegate said Really useful workshops. Good networking opportunities. Really informative. Another described the day as Absolutely brilliant! So informative and practical! Many delegates requested that this was an annual event which we hope to be able to provide.*

### **New guidance on gender questioning children for schools and colleges.**

In response to the increasing number of children questioning their gender, the government has considered the challenges and issues involved around this area for schools and colleges.

**Non- Statutory Guidance:** On the 19 December 2023 the Department for Education published a comprehensive guidance for teachers on how best to support pupils questioning their gender in schools. [Gender Questioning Children - non-statutory guidance \(education.gov.uk\)](https://www.gov.uk/government/uploads/system/uploads/attachment_data/file/1184447/Gender-Questioning-Children-non-statutory-guidance.pdf)

**Press Release:** [Parent first approach at the core of new guidance on gender questioning children - GOV.UK \(www.gov.uk\)](https://www.gov.uk/government/press-releases/2023/12/19/parent-first-approach-at-the-core-of-new-guidance-on-gender-questioning-children)

**Open Consultation:** The government are seeking practitioners' views on the draft non-statutory guidance and the consultation is open until 12 March 2024. [Guidance for Schools and Colleges: Gender Questioning Children - Department for Education - Citizen Space](https://www.gov.uk/government/consultations/guidance-for-schools-and-colleges-gender-questioning-children)

## Domestic Abuse – Non-Fatal Strangulation

Non-fatal strangulation is not about inflicting maximum force on the survivor, it is about power, control and instilling fear. The practice typically involves a perpetrator strangling or intentionally affecting their victim's ability to breathe in an attempt to control or intimidate them. Experiencing non-fatal strangulation can cause long term physical and psychological effects as well as trauma for the survivor.

Non-fatal strangulation was made a specific offence as part of the government's Domestic Abuse Act of 2021.

The Institute for Addressing Strangulation **launched this report** which showed that female victims of strangulation homicide aged 16 or over, were 54 times more likely to have been killed by an ex-partner or partner than a male victim of strangulation homicide.

The below animation has been created by system partners across Nottingham & Nottinghamshire health, social care, community partners and specialist domestic and sexual abuse services to increase awareness and understanding of the impact of non-fatal strangulation and where support can be sought.

When someone has been strangled often there are no indicators, or the visible signs may be different to what you might expect - the video below clearly explains what other signs you need to look out for in relation to the survivors:

- Ears
- Mouth
- Neck
- Chest
- Face
- Eyes and Eyelids
- Scalp



[NHS Nottingham & Nottinghamshire - Non-Fatal Strangulation \[YouTube\]](#)

### Training

Equation is currently providing FREE on-line training on non-fatal strangulation within domestic abuse, the medical and psychological impacts it has, and issues around how it can be prosecuted:

[Equation – Equation](#)

## Rapid Reviews

There is a statutory requirement on safeguarding partners to conduct a 'Rapid Review' when serious child safeguarding cases are identified. The reviews should be completed within 15 working days and a report provided to the National Child Safeguarding Practice Review Panel (NCSPRP). The NSCP remains committed to gathering as much learning as possible during the rapid review process and to only progressing to a Local Child Safeguarding Practice Review (LSCPR) where necessary.

### In Nottinghamshire we have completed 3 Rapid Reviews this year:

**23Y1** - Four-month-old baby boy who was frequently presented at hospital, become very unwell and was found to have been injected with insulin by his parent, who was diabetic. Mother was a care leaver.

#### Key learning

- Professional curiosity
- Trauma informed approaches

**23Y2** – Ten-year-old child who was sexually abused by a step sibling. Information from another local authority area was not appropriately followed up by agencies.

#### Key learning

- Professional curiosity
- Use of safe and well checks

**23Y3** – 5-month-old baby who died when staying away from home with family, bed sharing with a parent and siblings. Safer sleep messages had been delivered. Initial concerns about alcohol use but these were not evidenced with further investigations. The family were travellers and moved between counties.

#### Key learning

- Work to be undertaken to ensure all families, including more vulnerable or transient families hear and understand the safer sleep information.

[The Lullaby Trust - Safer sleep for babies, Support for families](#)

Go to our **Learning in Practice** area of our website to see **Learning Briefings** on Local Child Safeguarding Practice Reviews and Rapid Reviews: [Learning and improvement framework \(nottinghamshire.gov.uk\)](#)

## Professional Curiosity

The lack of professional curiosity used, has been highlighted within local rapid reviews (as highlighted previously) and therefore has been identified as an area of learning for practitioners.

Professional curiosity is about exploring and understanding what is happening with a family, a child, or an adult. It is about not accepting a situation as it appears, especially if it doesn't feel right.

Professional Curiosity is about:

- Being respectfully nosy
- Being open minded and not taking everything at face value
- Thinking the unthinkable, believing the unbelievable

Click on link below of a video which explains why it's so important in preventing death due to domestic abuse:

[Professional Curiosity - YouTube](#)



To download a useful 7-minute briefing on Professional Curiosity developed by the Nottinghamshire Safeguarding Adults Board go to:

[professionalcuriosity.pdf \(nottinghamshire.gov.uk\)](#)



## Still places left!

### When we are Scared - An Introduction to Trauma

This 2-hour virtual training event offers an introduction to trauma. The session will start with an exploration of our human need for safety and what happens when we are not (or do not feel) safe. It will then look at definitions of trauma and think about different contexts where trauma might be found. It will consider how humans adapt to cope with traumatic experiences, recognising that these are protective reactions. Throughout, it will think about the importance of connection and relationships and why these are so important in recovery from trauma.

#### **Intended outcomes from the session:**

- Developing an understanding of different definitions of trauma and contexts where it might occur.
- Finding out about the potential effects of trauma on individuals and communities.
- Understanding how trauma can impact the developing child.
- Developing knowledge of what protects us and what helps when we have experienced trauma.

**Trainer:** Fiona Holiday- Play and Creative Arts Therapist, Trainer, and Consultant on behalf of Small Steps Big Changes.

#### **Booking on:**

- Simply go to our login page to book a place on the above event:  
<https://nottsccllearningpool.com/login/index.php>

For any further support or guidance please contact Sarah Bale: [sarah.bale@nottsccl.gov.uk](mailto:sarah.bale@nottsccl.gov.uk) or 0115 9774439.

#### **Course feedback so far:**

*'I thought that the presenter had a lovely style, and the course had the right mix of info and break out rooms.'*

*'The training was amazing really informative and made me really understand and reflect on the impact of trauma on young (and adult) people.'*

*'Lots of useful ideas to share with parents around anxiety, trauma and adverse experiences, this will help when exploring level of anxiety and trauma and how best to suggest a parent supports a child.'*



## TRAINING



### Up and coming new course!

#### **An introduction to a multi-agency approach to working with cases of intra-familial child sexual abuse.**

##### **About the course**

This one-day introductory course delivered via MS Teams provides an overview of the key issues needed to support professionals who work in collaboration with other agencies in identifying and responding to intra-familial child sexual abuse.

##### **What you can expect to learn**

A better understanding of:

- the scale and nature of child sexual abuse
- how the impact of child sexual abuse presents across the life course
- how children communicate their experiences of sexual abuse and the professional role in helping them do this
- how and why sexual abuse happens in families
- the importance of multi-agency working when supporting children and families affected by child sexual abuse.

Greater confidence in identifying and responding to concerns of intra-familial child sexual abuse.

Improved ability to identify the potential signs and indicators of sexual abuse and sexually abusive behaviour.

**This engaging course will be led by two expert trainers from a range of backgrounds across a multi-agency safeguarding partnership on behalf of the Centre of expertise on child sexual abuse.**

##### **Dates:**

- **Weds 17<sup>th</sup> April 2024**
- **Tuesday 4<sup>th</sup> June 2024**

##### **Booking on:**

- Simply go to our login page to book a place on the above event:  
<https://nottsccl.learningpool.com/login/index.php>







## E Learning

### Reminder!

The NSCP provides online e-learning packages which are suitable for those needing an introduction to a subject or wishing to refresh their knowledge around a subject. We currently have **28 eLearning courses** for you to access.

### New E Learning

On Monday 2<sup>nd</sup> October our new E Learning went live:

- Child Protection Conferences and Looked After Children Reviews

This module is suitable for staff in a variety of roles who work with children, young people, and their families and who may at some point be invited to a Child Protection Meeting or Looked After Children review which is convened by Childrens Social Care. It gives examples of completed report templates and guidance for practitioners to use.

This module will take approximately 1 - 2 hours to complete.

To access the eLearning go to our usual NSCP Training log in page: [Notts CC LMS: Log in to the site \(learningpool.com\)](#)

### Multi-Agency Report Templates

The NSCP has developed and recently updated the multi-agency report templates that you can use if your organisation doesn't have its own:

- Agency Report to Initial/Review Child Protection Conference
- Agency Report to Initial/Looked After Review

These templates can be accessed in the eLearning or by going to the Safeguarding Children Procedures : [Additional Resources \(proceduresonline.com\)](#)

## Meet the NSCP Team:



Sam Harris is the Service Manager for the NSCP. She facilitates the partnership's operational and strategic meetings and is currently supporting the development of the new business plan and the cross-partnership audit framework.



Haley Thompson is the Development Manager for the safeguarding partnership. Her main responsibilities are around statutory review, including writing the rapid reviews following serious safeguarding incidents and supporting independent Local Child Safeguarding Practice reviews. Haley also has a role in facilitating the Child Death Overview Panel.



Trish Jordan is the NSCP Training Coordinator. Her main role is to organise and facilitate the Annual Multi-Agency Training Programme on behalf of the Partnership. The learning from local case reviews, national reviews and guidance and feedback from partner organisations informs this.



Sarah Bale is the Training Administrator for the NSCP. She supports Trish with the setting up and promotion of all new training events and supports partners to access both the face-to-face events and the e learning, including giving any other advice required. She also minutes the Learning and Workforce Development Group.



Sarah Beet is a Business Support Administrator. She administers the multiagency Child Death Review process for Nottinghamshire and Nottingham City and provides administrative support to the NSCP in the area of case reviews and other developmental work.



Lucy Argyle is the Business Support Administrator for the NSCP. She supports Sam Harris by arranging and minute taking for the partnership's operational and strategic meetings and provides administrative support for the Creative Solutions Panel.

E mail: [info.nscp@nottscc.gov.uk](mailto:info.nscp@nottscc.gov.uk)

Telephone 0115 977 3935