



## Nottinghamshire Safeguarding Children Partnership

# NSCP Newsletter

Welcome to the **September 2025** edition of the NSCP newsletter.

We have busy times ahead but also exciting times with the government recently launching the Families First Partnership (FFP) programme, backed by over £500 million of funding for the 2025/26 financial year. This investment is intended to support local authorities and their partners to design and implement end-to-end system reform focused on providing effective early help, family support and child protection services. The FFP programme builds on the work of the Families First for Children (FFC) Pathfinder programme. These reforms bring a significant shift and refocus on how we help, protect and support children and families.

This programme will include the work already started in Nottinghamshire on transforming the children's front door (MASH) and the early help services, including the development of Family Hub Networks. Effective communication and workforce engagement will be crucial in driving successful transformation, so the Partnership aim to keep you fully informed of plans and progress made. More information on the programme is included in this newsletter.

Please see list opposite of further content this time – we hope you find it interesting and useful for your roles in safeguarding children.

**Please note this is a longer newsletter than usual as we were unable to produce a newsletter for May 2025.**



**Leona Scurr - Temporary Assistant Chief Constable  
Chair of NSCP Senior Leadership Group.**



### Also in this issue

- Sexual Health Service Nottingham and Nottinghamshire
- Multi-Agency Working
- Interagency Safeguarding Children Procedures; NSCP & NCSCP
- Crime and Policing Bill 2025.
- Report: "It's Silent: Race, Racism and Safeguarding Children".
- Keeping Children Safe in Education (2025)
- New Learning Management System (LMS)
- E Learning Update
- NSCP Child Criminal Exploitation – The Power and Use of language
- Training: Safeguarding Children and Anti-Bullying
- External Training Opportunities
- Meet the NSCP Team
- And more....

## Nottinghamshire Families First Partnership

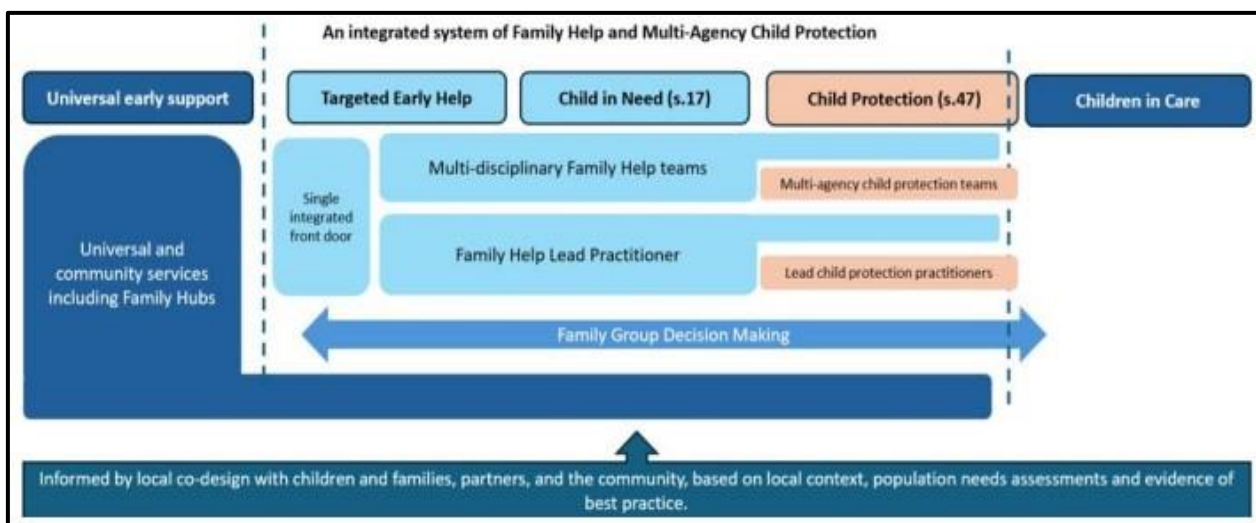
The Families First Partnership (FFP) programme is designed to improve how organisations work together to support families and protect children. It aims to create a seamless system that combines early help for families and multi-agency child protection.

As part of this programme, we will work closely with colleagues, families and children, to understand what currently works and how the local system could be better. We will test and learn together to create a whole system approach to focus more on earlier intervention and improved joined-up child protection processes.

**Local partners, including the council, the police and health organisations will develop a system where:**

1. Multi-disciplinary Family Help provides early intervention and support to families with complex needs.
  2. Multi-agency Child Protection Teams (MACPTs) with the police, education, health and the local authority, forming expert-led teams to handle child protection matters.
  3. Family Help Lead Practitioners are a main point of contact for each family to coordinate support.
  4. Family Group Decision Making to empower families to make plans for their children's welfare.
- From the first contact a multi-disciplinary approach will enable and support families.
5. Improved data sharing and partners using the same measures to track progress

*Locally designed systems that meet the needs of the population with effective, integrated and joined up services with partners*



The benefits of this approach:

- Children and families have fewer changes in their main contact person (lead practitioner), allowing them to build better relationships with professionals - improving trust and co-operation.
- Families should feel empowered and involved in decision-making.
- Children's safety, well-being and stability are improved, keeping families together whenever possible.
- Better co-ordination and collaboration between partner agencies, ensuring that families receive comprehensive and consistent (relevant?) support.

**For more information read:** The Families First Partnership (FFP) Programme Guide (March 2025)  
[The Families First Partnership \(FFP\) Programme Guide](#)



## Partnership Shout Out

This edition's shout out is to Moira Loadman, the education adviser at the MASH and all-round willing contributor to the NSCP. Moira has been with the MASH since its inception and provides an invaluable source of trusted safeguarding advice and support to any of Nottinghamshire's schools.

She also works closely with the police on leading the effective delivery of Operation Encompass to ensure schools know when children in their care have experienced domestic abuse in their family home.

Moira is a longstanding member of the NSCP training pool, providing warm and engaging delivery on a range of our well-reviewed safeguarding courses and often covering for colleagues on training when needed.

Moira's knowledge, experience and kindness mean that she is frequently called on to support and facilitate in spaces where development work is taking place. Moira's proactive leadership through the recent testing in and relocation of the MASH to Oak House has been vital.

Thankyou Moira for being a consistent voice of optimism and for being willing to step into any space where you feel you can make a difference for children.

## The new Sexual Health Service Nottingham and Nottinghamshire



**Sexual Health Services**  
Nottingham and Nottinghamshire

We are excited to announce the new County-wide sexual health service which launched on the 1<sup>st</sup> October 2024. This service, commissioned by Public Health has merged the previous three services providing sexual health located across the County.

- Sexual health Nottingham, based at City hospital
- My Sexual health, based at King's mill hospital
- TriHealth Bassetlaw, based at Worksop/Retford

The aim of the service is to provide comprehensive sexual health and contraception care to the people of Nottingham City and Nottinghamshire, and to target those most at risk of sexual health inequalities.

- ✓ Free and confidential services
- ✓ Comprehensive STI testing and treatment
- ✓ Contraception and reproductive health support
- ✓ HIV prevention and management (including PrEP and PEP)
- ✓ LGBT+ inclusive and culturally competent care
- ✓ Expert advice and support
- ✓ Education, training and referral pathways

We can direct you to our new interactive website at [www.sexualhealthnn.co.uk](http://www.sexualhealthnn.co.uk) for up-to-date information regarding clinic locations and times, STI testing, training and opportunities for allied health professionals.

Call us on **0300 131 7010**

Visit us on social media platforms, **Instagram**

<https://www.instagram.com/sexualhealthservicesnotts/>, **Facebook** @ISHSNN, **TikTok** @sexualhealthnn and **X (formerly Twitter)** <https://x.com/sexualhealthnn>.

We have a dedicated health promotion and outreach team who are committed to working with partner agencies to improve patient outcomes. They provide bespoke and multi-agency training as well as workshops for young people. Contact them at: [nottinghamshire.outreach@nhs.net](mailto:nottinghamshire.outreach@nhs.net)

Let's work together to advance sexual health care in our community!

# Multi-Agency Working



## Multi-agency working and Information sharing

Source: NSPCC learning

Date Published :21 January 2025

NSPCC Learning has published a suite of resources exploring how safeguarding professionals can successfully work together and share information within and between agencies. The resources include: an evidence snapshot summarising findings from research published between 2014 and 2023 about multi-agency working and information sharing in children's social work; a series of practice points designed to help social workers focus on the actions that support good multi-agency working and information sharing; and three expert insight films. The resources highlight the importance of multi-agency working and information sharing in achieving the best outcomes for children and their families.

### Read the evidence snapshot:

[Effective multi-agency working and information sharing: evidence snapshot](#)

### Read the practice points:

[What helps to support effective multi-agency working and information sharing?](#)

### Watch the films:

[Multi-agency working and information sharing: expert insights](#)

## New resources to use with children, young people and their families

- The Department for Education (DfE) has added new materials to support 'Working together to safeguard children', the statutory guidance on multi-agency working in England. The resources are designed for practitioners to share and use with children, young people and their families.

These include:

- an illustrated guide [Statutory Guidance - Working Together Guidance](#)
- an animated video [An animated guide to Working Together to Safeguard Children for children and young people](#)
- and a toolkit

Practitioners who would like to use the toolkit can request a copy from:

[workingtogether.statutoryguidance@education.gov.uk](mailto:workingtogether.statutoryguidance@education.gov.uk)

## Interagency Safeguarding Children Procedures; NSCP & NCSCP

### **New Chapter: Working with Large Sibling Group Families**

Large families can face unique child protection risks due to the complexity of managing multiple children and the possibility of resource limitations affecting the help that can be offered. These issues include Neglect, Emotional Abuse, Physical Abuse, Inadequate Supervision, Parents with Mental Health Problem, Substance Misuse, Domestic Abuse, and Poverty.

These issues are not specific to larger families, but the number of children in the home is an additional factor that needs to be considered in risk assessments. For the purposes of this guidance, a large sibling group refers to 5 or more children.

For more information go to this chapter in the procedures: [Working with Large Sibling Group Families](#)

### **Escalating for the right Outcome – Conflict Resolution and Professional Disagreement Policy**

This chapter was extensively revised in January 2025 – have you seen it? When working in the arena of safeguarding and child protection, it is inevitable that from time to time, there will be practitioner disagreement. Whilst this is understandable and generally acceptable, it is vital that such differences do not affect the outcomes for children and young people. This procedure provides a process for resolving practitioner disagreements and ensuring there is effective challenge in the system. It also provides practitioners with advice and support to enable them to escalate concerns where disagreements are not resolved at a practitioner level.

It includes a:

- flowchart describing the Stages of Escalation
- an appendix of Escalation Contacts for Nottingham and Nottinghamshire
- a form to document the case identified requiring escalation for the purposes of Safeguarding a Child/ren

[Escalating for the right Outcome - Conflict Resolution...](#)

## National Guidance and Updates



### Crime and Policing Bill 2025.

The Crime and Policing Bill was introduced in the house of Commons on 25 February 2025.

The Crime and Policing Bill has been laid before Parliament. It includes provisions to introduce new offences of child criminal exploitation and cuckooing (where a vulnerable person's home is used by others to commit criminal activity). It aims to update the legislation around child sexual abuse material by introducing: new offences around using or promoting the use of AI to generate child sexual abuse material and moderating or administering websites that host child sexual abuse material; and a new power for Border Force officers, where reasonably suspected, to search the digital devices of individuals arriving in the UK for child sexual abuse material. It introduces a new statutory aggravating factor of grooming applicable in sentences around child sexual abuse offences and updates the legislation around child abduction by a person connected with the child, where the child is taken out of the UK.

The Bill introduces a new statutory duty for individuals undertaking key roles with responsibility for children and young people in England to report sexual abuse when they are made aware of it, alongside a new criminal offence of attempting to prevent someone reporting child sexual abuse. The Bill provides for a limited number of exceptions to the duty to report, which include those providing specified services (to be set out in regulations) that relate to the safety or wellbeing of children and where confidentiality is in the best interests of children. The Bill also proposes that adults working in regulated activity under supervision will be eligible for enhanced DBS checks.

Different parts of the Bill apply to different parts of the UK.

Home page: [Crime and Policing Bill 2025 - GOV.UK](#)

The Home Office, Ministry of Justice has produced approximately 21 fact sheets which provide more information about the Bill (last updated 21 July 2025). Some examples are:

- [Crime and Policing Bill: overarching factsheet - GOV.UK](#)
- [Crime and Policing Bill: child criminal exploitation, cuckooing \(home takeover\) and coerced internal concealment factsheet - GOV.UK](#)
- [Crime and Policing Bill: child sexual abuse material factsheet - GOV.UK](#)
- [Crime and Policing Bill: counter-terrorism and national security factsheet - GOV.UK](#)

To see all the factsheets go to: [Crime and Policing Bill 2025: factsheets - GOV.UK](#)



## Report- “It’s Silent: Race, Racism and Safeguarding Children



This report from the Child Safeguarding Practice Review Panel is part of an ongoing series of publications to share information arising from work undertaken by the panel with:

- safeguarding partners
- those working in child protection

It explores what happened to 53 children from Black, Asian and Mixed Heritage backgrounds who were the subject of child safeguarding reviews between January 2022 and March 2024.

It found that there is a significant silence in talking about race and racism within child safeguarding practice. This silence often renders the safeguarding needs of Black, Asian, and Mixed Heritage children invisible, both in practice and in the system for learning from reviews. As a result, the current system misses many opportunities to learn from incidents where Black, Asian, and Mixed Heritage children have been seriously harmed or died, which could leave this group of children vulnerable and at risk of harm in the future.

The purpose of this briefing is to share learning from analyses of rapid reviews and local child safeguarding practice reviews (LCSPRs) to inform the work of safeguarding partners.

[Race, racism and safeguarding children - GOV.UK](#)

## Keeping Children Safe in Education

NSPCC Learning has published a CASPAR briefing summarising the Department for Education’s (DfE’s) 2025 updates to the statutory safeguarding and child protection guidance for schools and colleges in England, ‘Keeping children safe in education’ (KCSIE). The guidance came into force on 1st September 2025.

Updates from KCSIE 2025 include:

- the DfE’s Working together to improve school attendance is now statutory guidance
- changes to the list of content risks under online safety, adding in disinformation, misinformation and conspiracy theories
- more information on the DfE guidance on generative artificial intelligence (AI)
- additional information on, and clarity around, alternative provision guidance
- clarity on Virtual School Heads and their non-statutory responsibilities around children in kinship care.

**Read the CASPAR briefing:** [Keeping children safe in education \(KCSIE\) 2025: summary of changes](#)

**Read the guidance:** [Keeping children safe in education 2025](#)



## Rapid Reviews

There is a statutory requirement on safeguarding partners to conduct a 'Rapid Review' when serious child safeguarding cases are identified. The reviews should be completed within 15 working days and a report provided to the National Child Safeguarding Practice Review Panel (NCSPRP). The NSCP remains committed to gathering as much learning as possible during the rapid review process and to only progressing to a Local Child Safeguarding Practice Review (LCSPR) where necessary. LCSPR Reports are published on our website, however we do not publish Rapid Reviews Reports, as there is no statutory requirement to do this.

**We have six Rapid Reviews to share with you this time. Please be aware you may find some of the content, particularly around the family circumstances distressing:**

### 24-3

#### Circumstances

A one-year-old baby boy was found to have died at home, following parents calling an ambulance. He had been born extremely prematurely, at 27 weeks of gestation, and had several health needs. Both he and his older siblings were subject to Child Protection Plans, due to concerns about neglect. Two older siblings had been removed from parents care previously due to concerns about neglect. Prior to his death, there were increasing levels of concern about him not being brought to health appointments and home conditions. The neglect toolkit had not been used in this case.

#### Partnership learning

- The Nottinghamshire Safeguarding Children Partnership queried the level of understanding about the additional vulnerability that the child's prematurity and health needs presented. We will further develop work that is already being undertaken, looking at how we best support families of preterm infants with complex health needs prior to discharge.
- There needs to be further work around the neglect toolkit not being used and a greater understanding of what the barriers are.
- There was a theme of professionals involved with the family not having a shared view about the level of concern for the children, such as different views about the home conditions. This could have been addressed by holding a multi-agency discussion or strategy discussion.
- Learning from recent audits highlighted to partnership colleagues that to be effective, strategy discussions must be timely, include all relevant partners and be well recorded.

## 25-1

### Circumstances

A 9-year-old boy was found deceased at home on 16 December 2024, with a ligature around his neck attached to his bedroom blind rail. He was living under a Special Guardianship Order at the time. His bedroom was noted to lack toys or personal items, with no light bulb, and locks fitted externally on children's doors. Concerns he had raised with his school counsellor and education provider had not been fully assessed. A local child safeguarding practice review is being completed currently to seek additional multi agency learning.

### Partnership learning

- Greater understanding is needed across the partnership about SGOs, including oversight, support, and avoiding assumptions of safety.
- Schools should ensure safeguarding concerns disclosed in counselling are clearly recorded, assessed, and referred, supported by regular review of safeguarding files to identify patterns.
- The partnership will reinforce the importance of effective MASH referrals in cases of emotional abuse, and how to escalate concerns where responses are unsatisfactory.
- Regional and local SGO protocols should be strengthened to ensure histories and complexities are shared with all relevant agencies when orders are made.

## 25-2

### Circumstances

A review was completed following concerns that a 14-month-old child was found unresponsive while sleeping on the sofa with her mother's partner. The family was not known to children's social care. There had been prior concerns about her mother's mental health, level of support and engagement with services and home conditions. Additional concerns were known regarding the child's mother's partner's poor mental health.

### Partnership learning

- It may have been beneficial for agencies to consider what additional support may have been available regarding poor home conditions at an earlier opportunity. In addition, the wider implications of this alongside worries around mother's mental health and missed appointments creating accumulative risk.
- There could have been more consideration around information sharing regarding the cumulative risk created. That would have created an opportunity for information to be shared regarding concerns around mother's partner's historic poor mental health.
- If Health had "one record" that all health providers shared, we would have been able to see historic issues and may therefore have explored the current situation with mum and partner in more detail. This is a national issue and is raised by health in reviews in anticipation of the theme being considered through the national panel identifying through reviews submitted.

## 25-3

### Circumstances

A 2-month-old baby, born full term with no known health conditions, was found unresponsive by his grandfather and later confirmed deceased. On attendance, paramedics noted severe concerns about the home environment, which scored 7 out of 9 on the clutter scale, with unsanitary conditions and rooms inaccessible due to rubbish. Prior to his death, professionals had not been fully aware of the living conditions, as they were often restricted to the living room during visits. This limited their ability to assess safer sleep arrangements or family dynamics. The review also identified issues around unclear family relationships and possible interfamilial abuse.

### Partnership learning

- The neglect toolkit is still not being used consistently; more work is needed to understand barriers, build practitioner confidence, and explore whether adopting the clutter scale across agencies would improve shared analysis of poor home conditions.
- Professionals did not have a clear picture of family dynamics and paternity; community health services should review how relationships are recorded and consider updating guidance.
- Safer sleep risk assessments were not embedded consistently in practice or recorded clearly; further assurance is needed from midwifery and healthy family teams on how these tools are being used and whether amendments are required.

## 25-4

### Circumstances

A 2-month-old baby, living with her 14-year-old mother, grandmother, uncle, and grandmother's partner, was placed to sleep after feeding. During the night, her mother reported she was unwell with nasal congestion and later fell asleep with her in bed supported by pillows. In the early hours, the baby was found unresponsive. When police and ambulance services arrived, they noted significant concerns about the home environment, including general uncleanliness, clutter, mouldy food, beer cans, cigarette litter, dog faeces from six dogs, and a lack of basic furnishings. Further concerns related to unclear paternity and previous anonymous referrals alleging sexual abuse of the mother, alongside the stepfather's history of investigation for child sexual offences, which had not been fully considered by all professionals.

### Partnership learning

- Strengthen record-keeping, analysis, and use of chronologies to ensure referrals fully reflect individual children and household members.
- Practitioners require training and support to manage challenging or hostile family interactions.
- Clearer pathways are needed to identify and share concerns about children not in education, and to ensure elective home education (EHE) is responded to with a safeguarding focus.
- Provide targeted partnership guidance on evidence-informed decision-making, including recording rationale and unmet needs.
- Improve Family Nurse Partnership information sharing with primary care and explore their attendance at safeguarding multi-disciplinary meetings.

## Circumstances

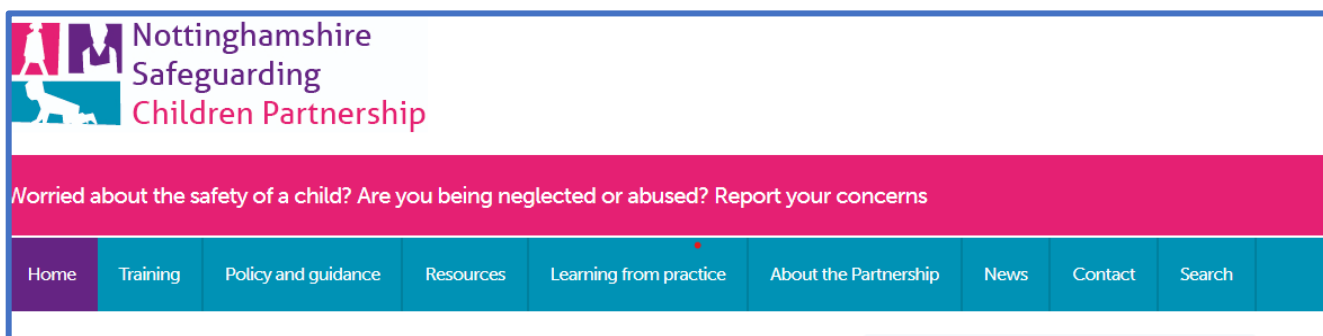
A 14-year-old boy lived with his mother and siblings and maintained a close relationship with his mother's stepfather, whom he referred to as his grandfather. At the time of his death, he and his half-siblings were subject to a Child Protection Plan due to concerns around his behaviour, disengagement from education, ketamine use, repeated missing episodes, neglect, and family breakdown. He was considered beyond parental control and at risk of criminal exploitation and had previously disclosed an allegation of sexual abuse involving his younger siblings' father. His mother reported being aware of his drug use for around two years. He was found unresponsive at home by his mother after returning late the previous evening. Although a home drug test taken the night before showed negative, its reliability was uncertain.

## Partnership learning

- Reinforce the importance of robust, reflective Multi-Disciplinary Team meetings and professional curiosity, including how Child Protection Plans are reviewed.
- Increase practitioner awareness of adultification, particularly of boys from Black and mixed-heritage backgrounds and ensure trauma-informed responses to behaviour in schools.
- Promote whole-family approaches, considering children's experiences within wider family dynamics and systemic adversity.
- Strengthen use of local support services and ensure accessibility for children and families who struggle to articulate their needs.

To find out more information about our published Local Child Safeguarding Practice Reviews go to our website: [Learning from practice](#)

## The NSCP Website:



[Nottinghamshire Safeguarding Children Partnership](#)



## New Learning Management System (LMS)

Our new learning management system went live in April of this year. This is the system you use to book onto all NSCP courses and where you also access all our eLearning. Our new LMS provider is called Kallidus. We are sorry for the delay in getting this up and running and for any inconvenience this has caused you and your organisation and thank you for your patience during this time. It took longer than anticipated to transfer data over from the previous system to the new.

### Training Events

You can now book onto all our events and access our e-learning via our course login page: [Identity](#). We are no longer taking bookings via email.

Please note if you had an account previously (and have used it in the last 2 years) we have been able to transfer your details onto to the new system, and you should have received an e mail from us asking you to **activate your new account** which may take 5-10 minutes initially.

If you need to check if your account details have been transferred over, or you need to create a new account, or just want some support or advice regarding our training you can email: [sarah.bale@nottscg.gov.uk](mailto:sarah.bale@nottscg.gov.uk)

To see all our up-and-coming training events go to our website: [Training events](#)

### E Learning

We currently have 7 eLearning courses of which we were able to transfer over from the previous LMS:

- Safer Sleep for babies (SIDS)
- Reducing Parental Conflict
- Trauma, Toxic Stress and Adverse Childhood Experiences (ACE'S)
- Child Criminal Exploitation and County Lines
- Managing Allegations and concerns in relation to adult working with children
- Child Protection Conference and Looked After Children Reviews
- Safeguarding and Looked after Children

## E Learning cont...

In addition, we are currently offering 2 new courses that we access/share with Nottinghamshire County Council:

- Safeguarding Children
- Safeguarding Adults

For any further queries about the above you can also telephone Sarah Bale on: 0115 9774439

## NSCP Child Criminal Exploitation – The Power and Use of language

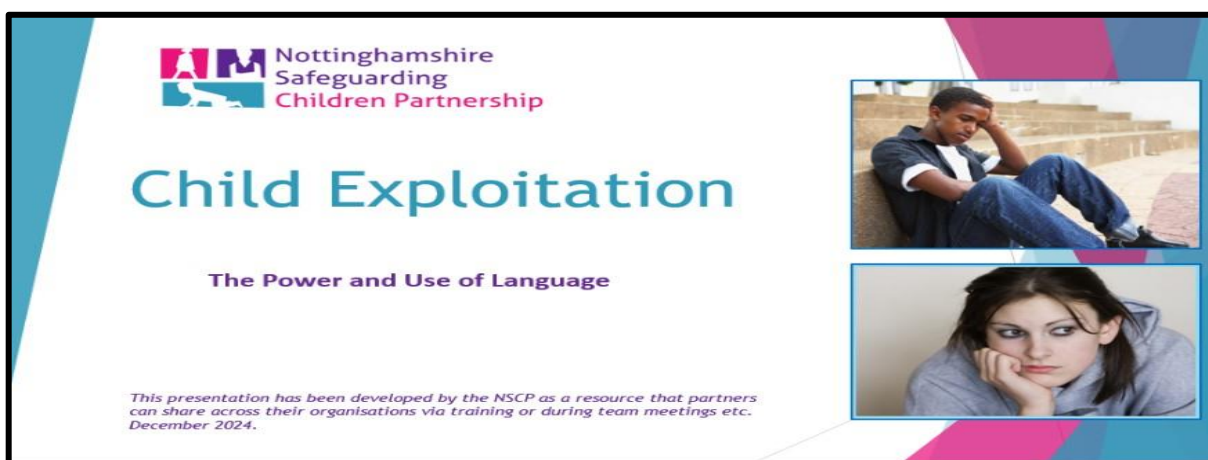
We need to think very carefully about the language that we use when raising concerns about a child impacted by exploitation. Language implying that the child or young person is in any way complicit with or responsible for the exploitation that has happened or may happen to them, reinforces the harm they have suffered and must be avoided. Language should reflect the presence of coercion and the lack of control children and young people have in abusive or exploitative situations and must recognise the severity of the impact exploitation has on the child or young person.

### Making words matter a practice knowledge brief [PDF]

The NSCP have developed a PowerPoint presentation: The Power and Use of Language of which you can access individually or share within your team meetings or during training sessions.

To access the PowerPoint and resources go to our website:

### Child Exploitation – The Power of Words





## New Course which has been welcomed by Partners Safeguarding Children and Anti-Bullying

We started offering this new course in September 2024 and since then 176 delegates have attended three events. It is a short course which is delivered over two and half hours and is available via Microsoft Teams.

This course aims to raise awareness of bullying and how bullying-type behaviours have changed in recent years, particularly online. The course also provides opportunities for discussions about what bullying is and how this differs to relational conflict, and how practitioners can respond to incidents of alleged bullying (both on and offline) in order to safeguard all children. The potential impact that bullying can have (in the short and long term), including the impact on a child's mental health and wellbeing is also explored.

**Target Audience:** This course is for all practitioners who work directly with children and young people.

**Trainer:** Nottinghamshire County Council partner – Katherine Marshall from the Education, Safeguarding, Health and Wellbeing Hub (ESHAWH).

Some feedback from previous delegates includes:

- *This is the best training I have done thank you.*
- *This course has been really useful and very relevant to my role. Great to have all the links to the anti-bullying alliance.*
- *Really enjoyed this training and i am taking away a lot of resources and increased understanding around this area.*
- *Thank you, very informative, much appreciated.*
- *Wow, can't believe how much information was packed into such a short time!*

### **Date of next NSCP event:**

- Wednesday 8 October 9.30 – 12.00
- Via MS Teams
- To book on go to our course booking on page [Identity](#)

### **FREE Anti-Bullying eLearning**

The Anti-Bullying Alliance has over 16 eLearning courses such as: What is Bullying, Responding to Bullying, Bullying and SEN/Disability, Mental health and Bullying, looked after children and bullying etc. To access any of their courses go to: [CPD online training](#)

**Anti-Bullying Week 2025 – Monday 10<sup>th</sup>- Friday 14<sup>th</sup> November 2025**





# TRAINING



## External Training Opportunities

### Joint Agency Response Training (JAR)

This eLearning introductory course is aimed at those who are new to the processes of responding to and reviewing childhood deaths and those who manage and administer these processes and is now available on the National Child Mortality Database website - please note this is National training therefore some processes described may differ slightly to what happens locally. This training is in addition to our local yearly Nottinghamshire JAR face to face/virtual training which focuses on our local processes which some of you may have already attended.

- An Introduction to the JAR Training (6-minute video) [Joint Agency Response SUDIC Training](#)
- It includes 10 videos, which are 10-15 minutes long and have been designed to be watched in several short sessions  
Please download and use the accompanying workbook as you watch the videos
- Once you have completed the videos and workbook, please complete the separate **SUDIC JAR Training Assessment form** and return it to [ncmd-programme@bristol.ac.uk](mailto:ncmd-programme@bristol.ac.uk). On successful completion you will receive a certificate, and the answer book that Accompanies the workbook
- This training package is CPD accredited (16hrs).

### Identifying and Responding to Intra- familial Child Sexual Abuse

This course has been developed by the Centre of Expertise on Child Sexual Abuse. This eLearning course takes approx. 90 minutes to complete, is entirely free and consists of three engaging modules, with interactive tasks, video explainers and a final assessment.

[eLearning | CSA Centre](#)

## Harmless

Harmless is the national centre of excellence for self-harm and suicide prevention: “We save lives by providing support, information, training and consultancy about self-harm to individuals who self-harm, their friends, families and professionals”.

They offer a variety of multi-agency training events via MS Teams E.G. Mental Health Awareness, Suicide Prevention and Intervention, Self-Harm Awareness, Gypsy, Roma, Traveller Self-Harm and Suicide Prevention, Self-Harm and Suicide Prevention for LGBTQIA+ Communities

[The Academy at Harmless Events - 80 Upcoming Activities and Tickets | Eventbrite](#)

## Equation

Equation is a Nottingham-based specialist charity that work with the whole community to reduce the impact of domestic abuse, sexual violence and gender equality.

They offer a range of multi-agency training events via MS Teams around Domestic Abuse E.G. Non-Domestic Abuse Stalking Awareness, how perpetrators of Domestic Abuse use Technology, Understanding and Responding to Domestic Violence and Abuse, and more. To sign up to receive news and updates, including training [Sign up | Equation](#)

## Prevent duty training: Learn how to support people susceptible to radicalization

Prevent is one part of the government's overall counter-terrorism strategy, CONTEST. The aim of Prevent is to:

- tackle the ideological causes of terrorism
- intervene early to support people susceptible to radicalisation
- enable people who have already engaged in terrorism to disengage and rehabilitate.

These government training courses are designed, and are appropriate for, staff working in sectors covered by the Prevent duty. These include education, health, local authorities, police and criminal justice agencies. Other sectors that are not covered may also complete this training. You do not have to complete all the courses. You should refer to your organisation's training requirements to determine which courses are appropriate for you.

## List of courses

1. [Course 1 - Awareness course](#)
2. [Course 2 - Referrals course](#)
3. [Course 3 - Channel or Prevent Multi-Agency Panel \(PMAP\) course](#)

## Meet the NSCP Team



Haley Thompson is the Interim Service Manager for the safeguarding partnership. She facilitates the NSCP's strategic meetings, manages the NSCP procedures and audit framework and supports the partners in their drive towards delivering the business plan priorities



Trish Jordan is the NSCP Training Coordinator. Her main role is to organise and facilitate the Annual Multi-Agency Training Programme on behalf of the Partnership. The learning from local case reviews, national reviews and guidance and feedback from partner organisations informs this.



Sarah Bale is the Training Administrator for the NSCP. She supports Trish with the setting up and promotion of all new training events and supports partners to access both the face-to-face events and the e learning, including giving any other advice required. She also minutes the Learning and Workforce Development Group.



Sarah Beet is a Business Support Administrator. She administers the multiagency Child Death Review process for Nottinghamshire and Nottingham City and provides administrative support to the NSCP in the area of case reviews and other developmental work.

Picture to follow in next edition

Emma North is the Development Manager for the safeguarding partnership. Her main responsibilities are around statutory review, including writing the rapid reviews following serious safeguarding incidents and supporting independent Local Child Safeguarding Practice reviews. Emma also has a role in facilitating the Child Death Overview Panel.

Picture to follow in next edition

Miranda Speed is the Business Support Officer for the Safeguarding Partnership. She line manages the Business Support Administrators within the Partnership and has oversight of the administrative tasks.

Picture to follow in next edition

Levin Nahmad is a Business Support Administrator for the Safeguarding Children Information Management Team (SCIMT). He is currently reviewing the administrative processes of SCIMT. Levin also provides cover for Sarah Beet.



Jenny Ford is a Business Support Administrator for the Safeguarding Children Information Management Team (SCIMT). She provides administrative support by responding to enquiries from partner agencies of whether a person is or has been known to children's social care.



Anita Catton is a Business Support Administrator for the Safeguarding Children Information Management Team (SCIMT). She provides administrative support by responding to enquiries from partner agencies of whether a person is or has been known to children's social care.



Karen Ford is a Business Support Administrator for the Safeguarding Children Information Management Team (SCIMT). She provides administrative support by responding to enquiries from partner agencies of whether a person is or has been known to children's social care.



Julie Worsnop is a Business Support Administrator for the Safeguarding Children Information Management Team (SCIMT). She provides administrative support by responding to enquiries from partner agencies of whether a person is or has been known to children's social care.

Picture to follow in next edition

Nita Odedra is the Business Support Administrator for the NSCP. She supports Haley Thompson by arranging and minute taking for the partnership's operational and strategic meetings and provides administrative support for the Creative Solutions

E mail: [info.nscp@nottsgov.uk](mailto:info.nscp@nottsgov.uk)  
Telephone: 0115 9773935